

Lasercutting User Guide: Basics for Illustrator

1. Set up your Illustrator file

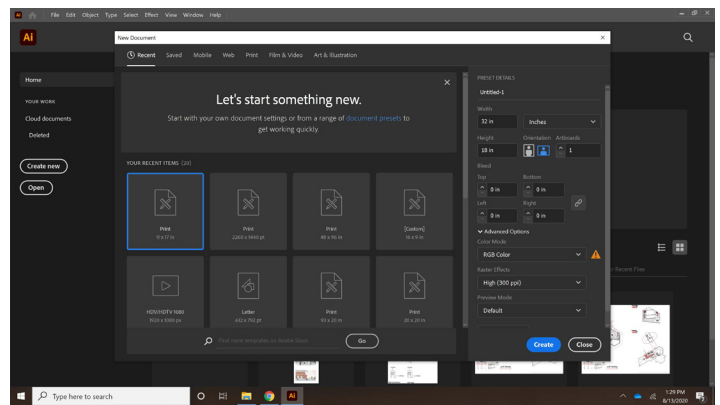
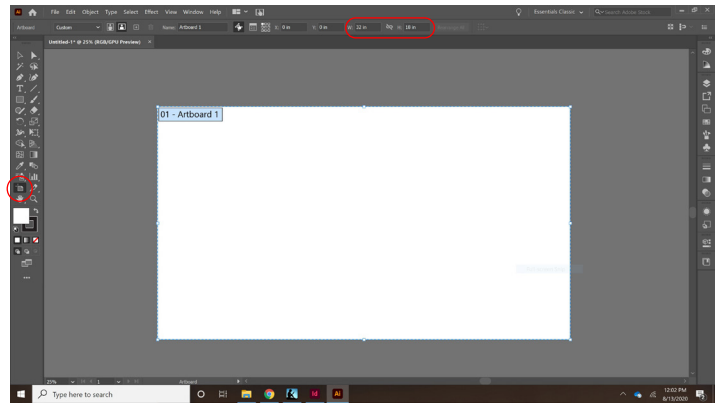
Set your Artboard to the same size as the lasercut bed: **32x18"**

You can do this by selecting the Artboard Tool icon and entering the dimensions or by using these dimensions when you are first creating the file

Make sure your document is in **RGB**

To do this go to :

File>
Document Colormode>
RGB Color



2. Linewieghts + Colors

Once your drawing is set up in the file organize the lines you want to etch and/or cut on seperate layers

Lines need to be **solid and a linewieght of 0.005**

For each action you want to do you will need seperate layers and make those lines seperate colors

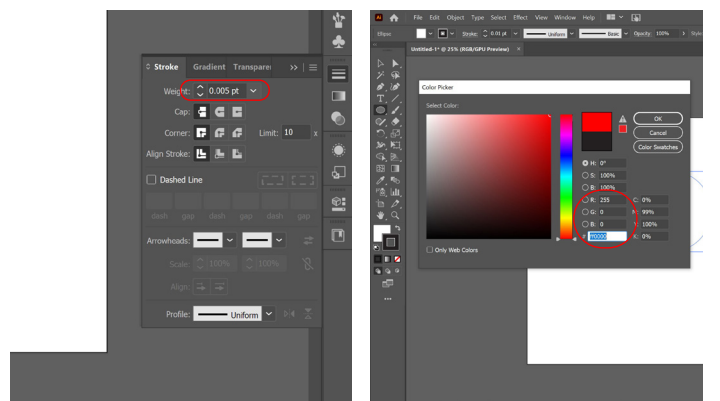
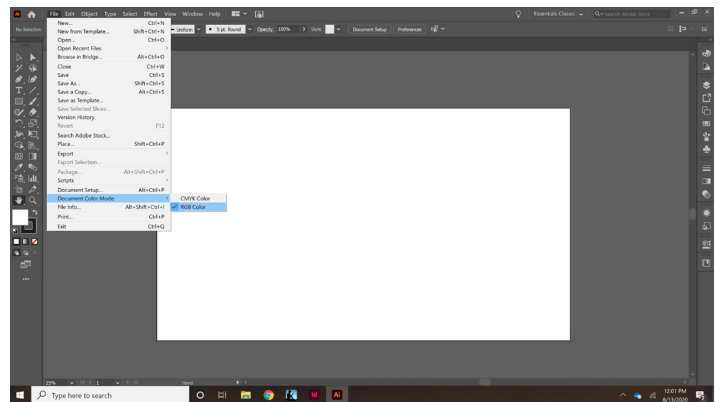
Make your **Cut Layer** one color and your **Etch Layer** another color

Use pure RGB colors:

Black: 0-0-0	Blue: 0-0-255
Red: 255-0-0	Magenta: 255-0-255
Green: 0-255-0	Cyan: 0-255-255
Yellow: 255-255-0	Orange: 255-102-0

My personal preference is to etch with green and cut with magenta

This is important because in cut order green is before magenta and it is best to etch before cutting



3. Illustrator Print Settings

Once your file is ready select **Print**

To do this go to :

File>
Print

A menu screen will pop up, you will need to select the correct **Printer** and **Media Size**

The printers at the FabLab are:

VLS6.60/75

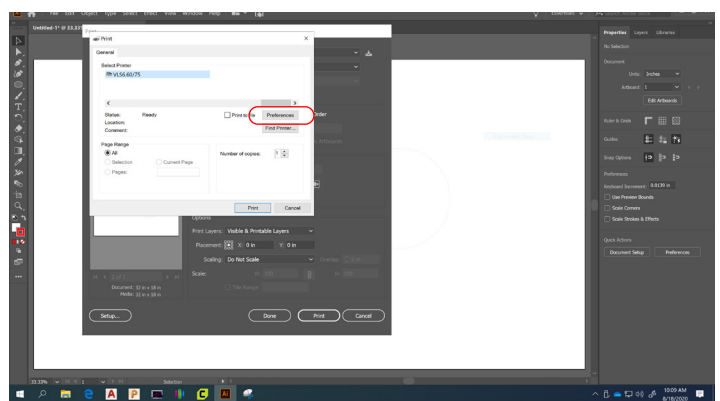
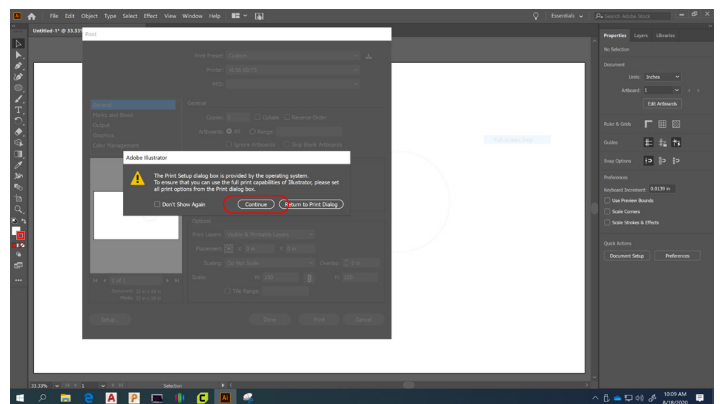
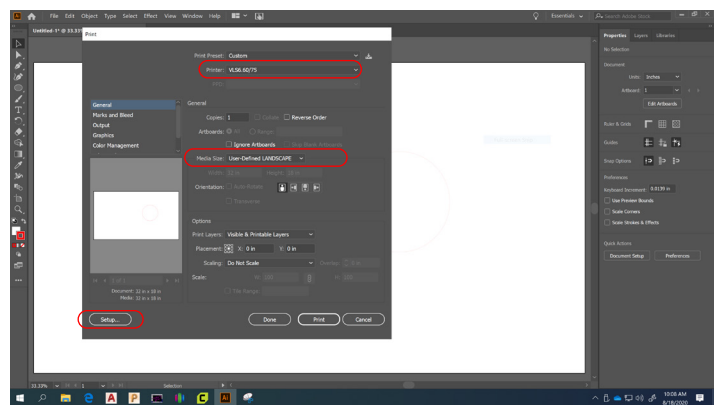
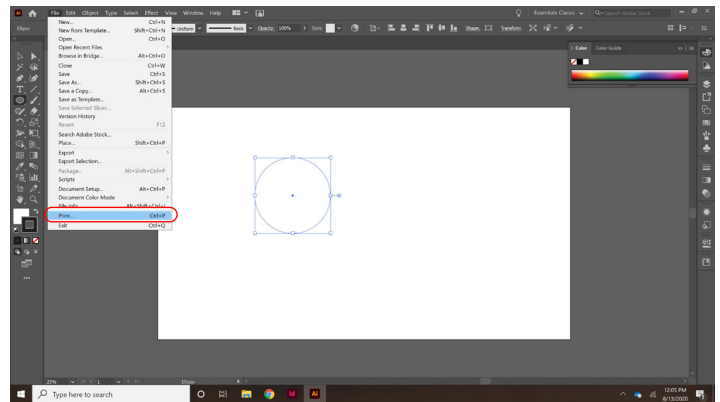
The Media Size you want is:

User-Defined LANDSCAPE

Then select **Setup** in the bottom right

A message will pop up- select **Continue**

On the new menu select **Preferences**



4. ULS Settings

Selecting Preferences will prompt the ULS Settings to open

Under **Manual Control** enter the preferred settings to the corresponding color

If you are using the recommended colors set green for etch and magenta to cut

Please locate the chart mounted on the wall, this contains recommended settings for commonly used materials and enter these settings

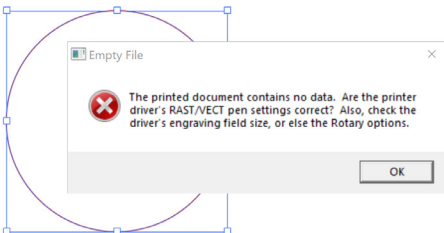
On the top right, using the **Mode** drop down enter the preferred method to the colors you are using, and skip the rest

Once your settings are entered select **Set** and **OK**

This will bring you back to the original print preferences, Select **Print**

This will prompt the ULS software to open, if it does not you can open it by selecting the red diamond icon (see right)

* If you get the following error, double check that your **lineweight is the correct size** and that your document is in **RGB Color Mode**



Once the ULS Software opens your file is now ready to be sent to the lasercutter

